

Fashion Show

Featuring *The Dress* by Laura Heine

This whimsical print is framed in pastel prints to showcase its sweetness. Who hasn't had "the dress" in their lifetime—the one you love and wear frequently?

Collection:	The Dress by Laura Heine
Technique:	Piecing, Appliqué
Skill Level:	Experienced Beginner
Crafting Time:	Weekend*
Finished Size:	52" x 65" (132.08cm x 165.10cm)

*Crafting time based on *Experienced Beginner* skill level



Project designed by Stacey Day
 Tech edited by Linda Turner Griepentrog

Fabric Requirements

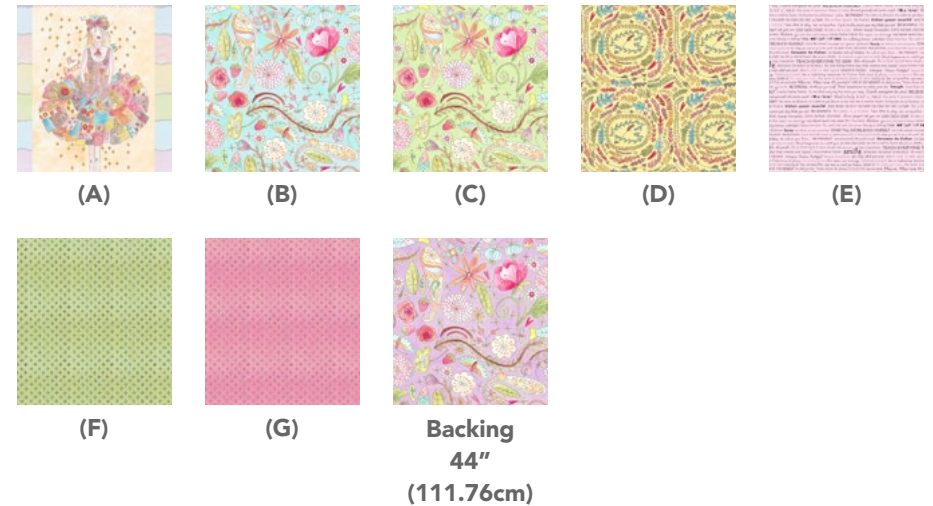
DESIGN	COLOR	ARTICLE CODE	YARDAGE
(A) The Dress	Multi	PWLH001.MULTI	1¼ yards (1.14m) (2 FULL repeats)
(B) Garden	Aqua	PWLH002.AQUAX	1½ yards (1.22m)
(C) Garden	Green	PWLH002.GREEN	⅝ yard (57.15cm)
(D) Fern	Yellow	PWLH003.YELLO	⅝ yard (57.15cm)
(E) Words to Live By	Pink	PWLH004.PINKX	⅓ yard (30.48cm)
(F) Twinkle	Green	PWLH007.GREEN	½ yard (45.72cm)
(G) Twinkle	Pink	PWLH007.PINKX	⅝ yard (57.15cm)

Backing (Purchased Separately)

44" (111.76cm)			
Garden	Purple	PWLH002.PURPL	3¼ yards (2.97m)
OR			
108" (274.32cm)			1⅔ yards (1.52m)

Additional Requirements

- Coats Dual Duty XP® All-purpose thread to match fabrics
- 60" x 72" (152.40cm x 185.42cm) batting
- Sewing machine
- Rotary cutter/mat/ruler
- Basic sewing and pressing supplies
- Plastic template material
- (1) Template A



Preparation

Trace the Template A onto plastic template material and cut out.

Cutting Instructions

WOF = Width of Fabric

Fabric A, fussy-cut:

(4) 15½" x 22" (39.37cm x 55.88cm), centering the motifs

Fabric B, cut:

(6) 7" x WOF (17.78cm x WOF); sub-cut (32) 7" (17.78cm) squares

Fabric C, cut:

(13) 1½" x WOF (3.81cm x WOF); from (1) strip, sub-cut (1) 1½" x 28" (3.81cm x 71.12cm)

Fabric D, cut:

(5) 3½" x WOF (8.89cm x WOF); sub-cut (96) Template A

Fabric E, cut:

(8) 1½" x WOF (3.81cm x WOF); from (2) strips, sub-cut (2) 1½" x 28" (3.81cm x 71.12cm)

Fabric F, cut:

(7) 2¼" x WOF (5.72cm x WOF), for binding

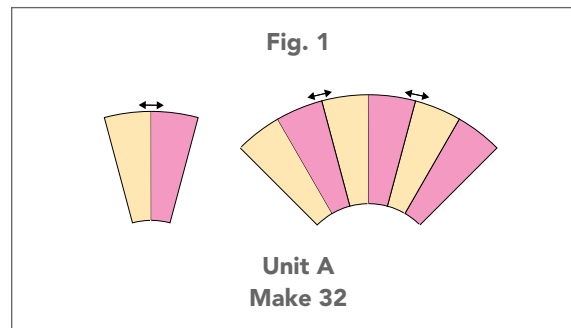
Fabric G, cut:

(5) 3½" x WOF (8.89cm x WOF); cut (96) Template A

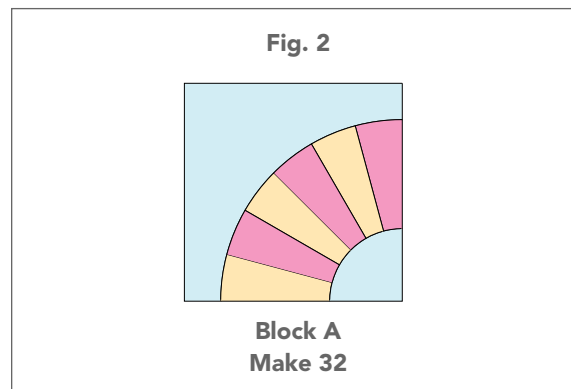
Sewing

All seams allowances are ¼" (.64cm) and pieces are sewn right sides together. Press all seams as indicated by arrows in the diagrams. Appliqué using a zigzag or blanket stitch and matching thread.

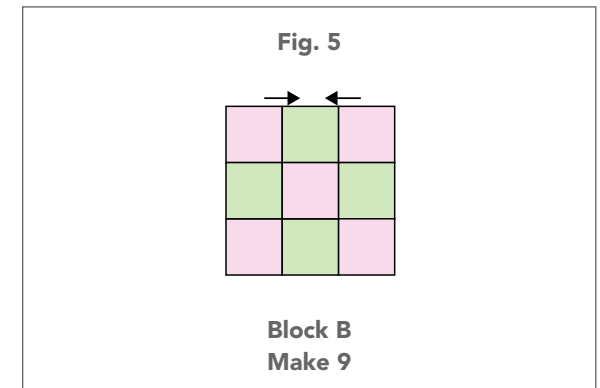
1. Sew the **Fabric D** and **Fabric G** template pieces together in pairs as shown. Press seams open. Sew (3) pairs together to make (1) A Unit. Make a total of (32) A Units (**Fig. 1**).

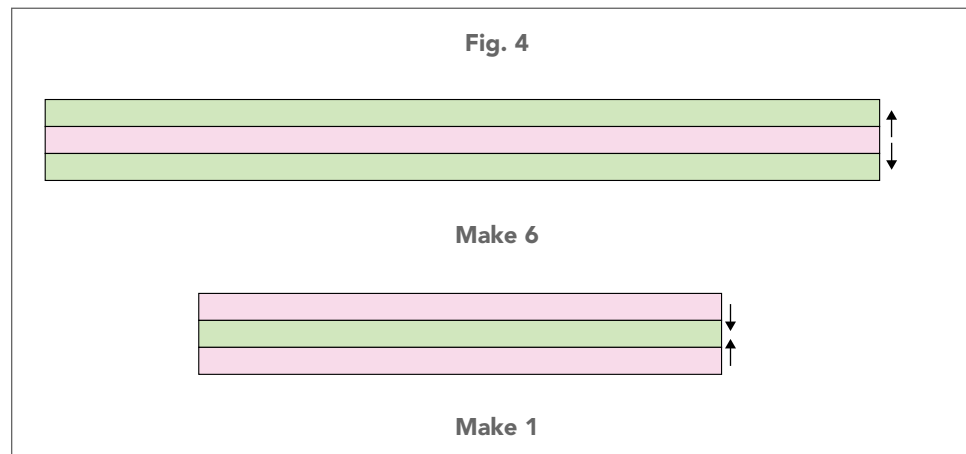
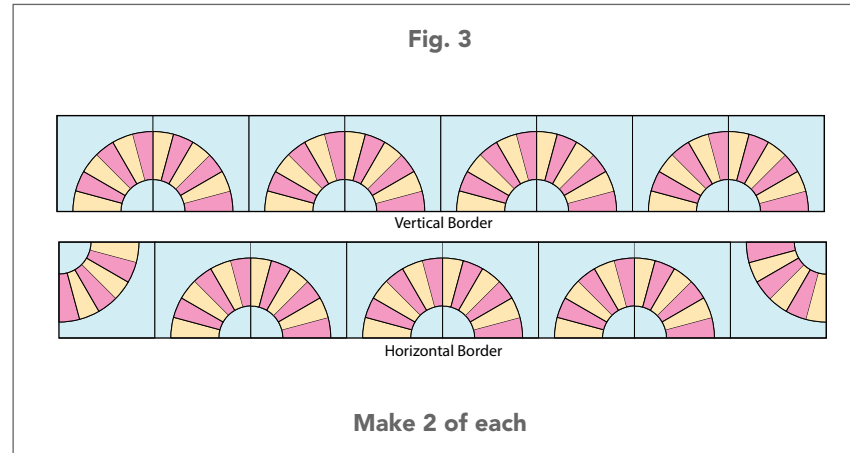


2. Pin each A Unit to a 7" (17.78cm) **Fabric B** square as shown. Appliqué the curved raw edges in place to make a total of (32) A Blocks. (**Fig. 2**)



3. Noting the orientation, sew the A Blocks together as shown into (2) vertical borders and (2) horizontal borders (**Fig. 3** on page 4). Set aside.
4. Sew (1) 1½" x WOF (3.81 cm x WOF) **Fabric E** strip between (2) 1½" x WOF (3.81cm x WOF) **Fabric C** strips to make (1) strip set. Make a total of (6) strip sets. From the strip sets, cut (6) 3½" x 22" (8.89cm x 55.88cm), (6) 3½" x 15½" (8.89cm x 39.37cm), and (9) 1½" x 3½" (3.81cm x 8.89cm) strips.
5. Sew a 1½" x 28" (3.81cm x 71.12cm) **Fabric C** strip between (2) 1½" x 28" (3.81cm x 71.12cm) **Fabric E** strip to make (1) strip set. From the strip set, cut (18) 1½" x 3½" (3.81cm x 8.89cm) strips (**Fig. 4** on page 4).
6. Sew the 1½" x 3½" (3.81cm x 8.89cm) strips together as shown, matching adjacent seams, to make (9) B Blocks (**Fig. 5**).





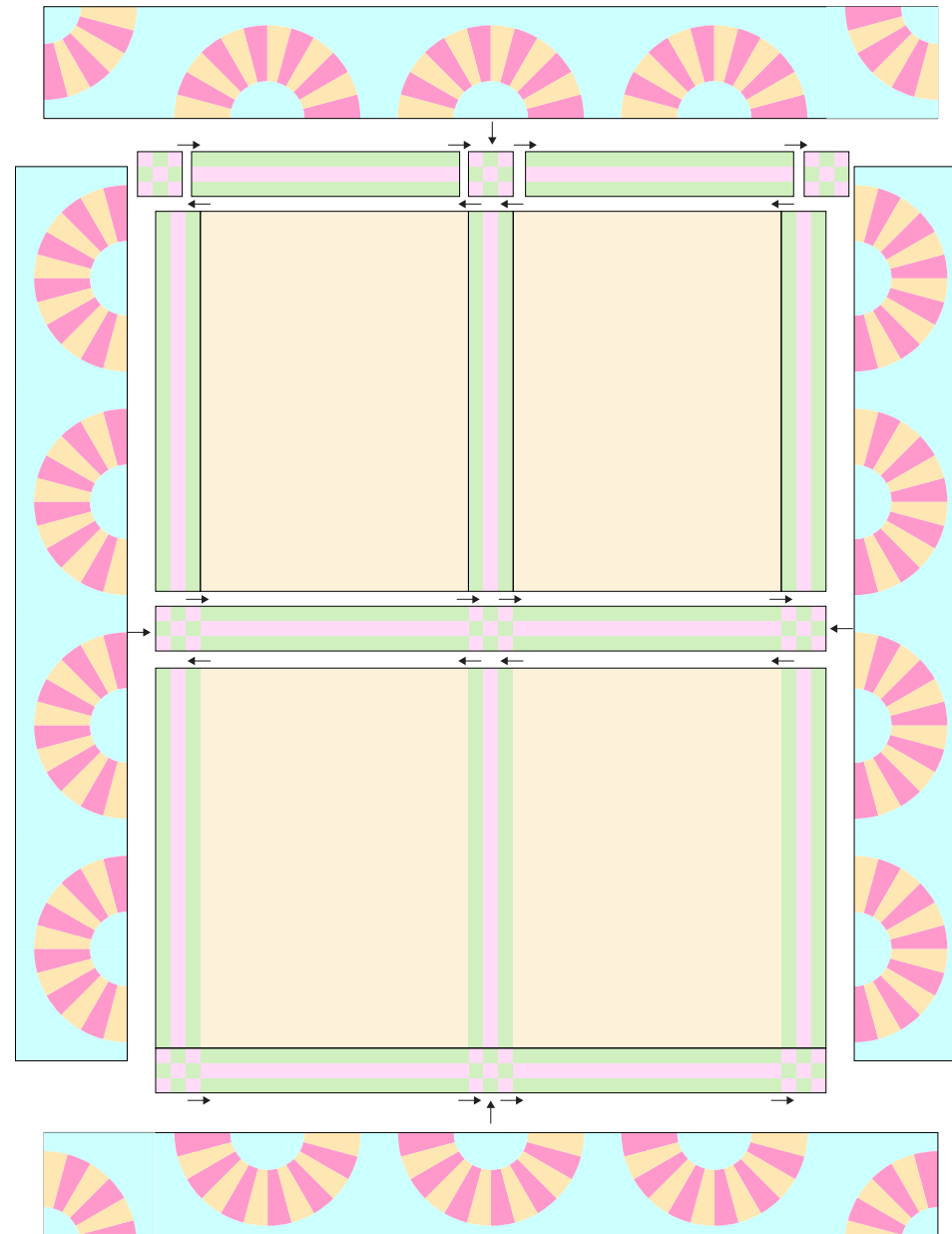
Quilt Layout

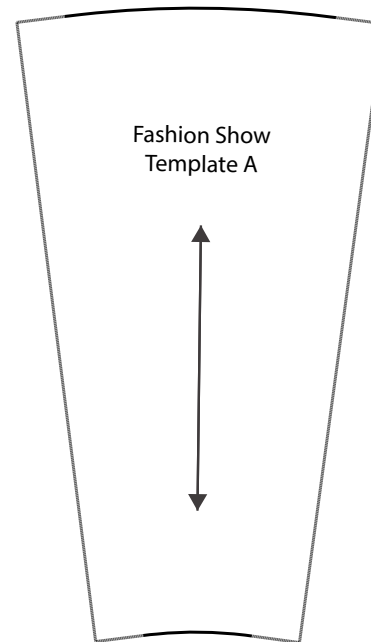
Quilt Top Assembly

- Following the **Quilt Layout**, sew together the 15½" x 22" (39.37cm x 55.88cm) **Fabric A** rectangles, B Blocks, 3½" x 22" (8.89cm x 55.88cm) strips, and 3½" x 15½" (8.89cm x 39.37cm) strips, matching adjacent seams, to make the quilt top.
- Noting the orientation, sew (1) vertical border to each side of the quilt top, then sew (1) horizontal border to the top and the other to the bottom of the quilt top.

Finishing

- Sew together the (7) 2¼" x WOF (5.72cm x WOF) **Fabric F** binding strips end to end using diagonal seams. Press the seams open. Press the binding strip in half wrong sides together.
- Layer the backing (wrong side up), batting, and quilt top (right side up). Baste the layers together and quilt as desired. Trim excess batting and backing even with the top after quilting is completed.
- Leaving an 8" (20.32cm) tail of binding, sew binding to top of quilt through all layers matching all raw edges. Miter corners. Stop approximately 12" (30.48cm) from where you started. Lay both loose ends of binding flat along quilt edge. Where these two loose ends meet, fold them back on themselves and press to form a crease. Using this crease as your stitching line, sew the two open ends of the binding together right sides together. Trim seam to ¼" (.64cm) and press open. Finish sewing binding to quilt.
- Turn the binding to the back of quilt and hand-stitch in place.





This square should
measure 1" x 1"
(2.54cm x 2.54cm)
when printed.

***** Measure templates before cutting to confirm printing at 100%*****