

Free Spirit 

# Confetti Celebration Quilt

Featuring True Colors by Tula Pink

<b>Collection:</b>	True Colors by Tula Pink
<b>Technique:</b>	Piecing
<b>Skill Level:</b>	Beginner
<b>Finished Size:</b>	72" x 72" (182.88cm x 182.88cm)

*All possible care has been taken to assure the accuracy of this pattern. We are not responsible for printing errors or the manner in which individual work varies. Please read the instructions carefully before starting this project. If kitting it is recommended a sample is made to confirm accuracy.*

Project designed by Stacey Day  
 Tech edited by Alison M. Schmidt

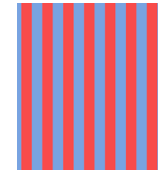
## Fabric Requirements

DESIGN	COLOR	ITEM ID	YARDAGE
(A) Fairy Dust	Cotton Candy	PWTP133.COTTONCANDY	2 yards (1.83m)
(B) Tent Stripe	Lupine	PWTP069.LUPIN*	$\frac{2}{3}$ yard (0.61m)
(C) Tula's True Colors	10" Charms	FB610P.TULATRUE	1 Pack
(D) Tula's True Colors	5" Charms	FB6CPTP.TULATRUE	1 Pack

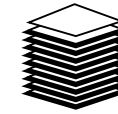
\* includes binding



(A)



(B)



10" Charm Pack

(C)



5" Charm Pack

(D)

## Backing (Purchased Separately)

### 44" (111.76cm) wide

Petal to the Metal Morning PWTP140.MORNING 4½ yards (4.11m)

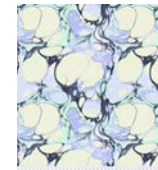
OR

### 108" (274.32cm) wide

Pinkerville Daydream QBTP002.DAYDREAM 2¼ yards (2.06m)



Backing  
44"  
(111.76cm)



Backing  
108"  
(274.32cm)

## Additional Recommendations

- 100% cotton thread in colors to match
- 80" x 80" (203.2cm x 203.2cm) batting

## Cutting

**WOF = Width of Fabric**  
**HST = Half Square Triangle**

### Fabric A, cut:

- (2)  $16\frac{1}{2}$ " x WOF (41.91cm x WOF); subcut
  - (4)  $16\frac{1}{2}$ " x  $16\frac{1}{2}$ " (41.91cm x 41.91cm)
- (2)  $16\frac{7}{8}$ " x WOF (42.86cm x WOF); subcut
  - (4)  $16\frac{7}{8}$ " x  $16\frac{7}{8}$ " (42.86cm x 42.86cm), and further cut once diagonally to yield
  - (8)  $16\frac{7}{8}$ " (42.86cm) HST

### Fabric B, cut:

- (5) full and (6) partial\*  $2\frac{1}{4}$ "-wide bias strips, or enough to make 305" (7.75m) of bias binding

### 10" charm pack, cut:

Cut each 10" (24.5") piece into (4) 5" x 5" (12.70cm x 12.70cm) squares. Combine with the 5" (12.70cm) charm pack squares. Select (196) 5" x 5" (12.7cm x 12.7cm) squares.

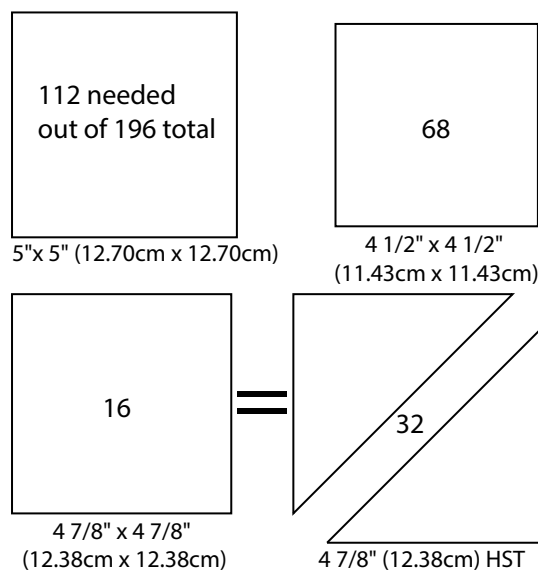
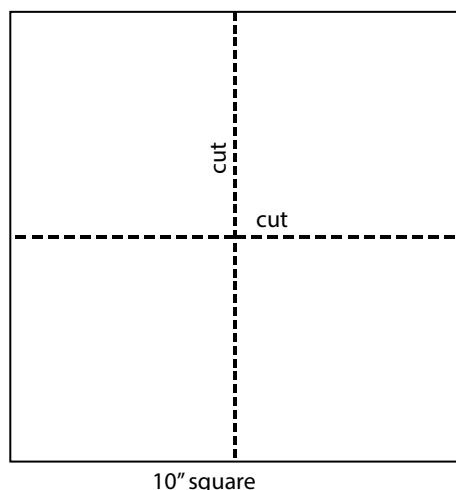
*Note: There will be (14) 5" (12.70cm) squares left over.*

Trim (68) of the selected squares to  $4\frac{1}{2}$ " x  $4\frac{1}{2}$ " (11.43cm x 11.43cm).

Trim (16) of the selected squares to  $4\frac{7}{8}$ " x  $4\frac{7}{8}$ " (12.38cm x 12.38cm), and subcut once diagonally to yield (32)  $4\frac{7}{8}$ " (12.38cm) HST.

(Fig.1)

Fig. 1



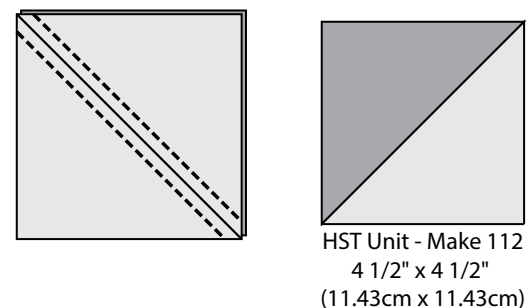
\*First cut the (5) full bias strips from the full 24" of yardage, then from the (2) leftover large triangles at each end of the yardage, cut (3) partial bias strips from the long side of each triangle.

## Instructions

**Note:** All seam allowances are  $\frac{1}{4}$ " (0.64cm). Pieces are sewn right sides together. Press seams open.

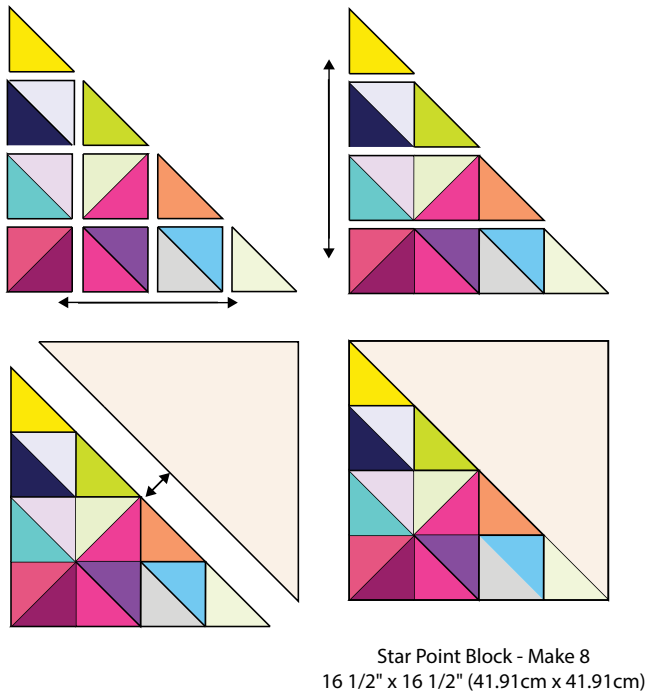
1. Draw a diagonal line from corner to corner on the wrong side of (56) 5" x 5" (12.70cm x 12.70cm) squares. Place a marked square on a contrasting unmarked 5" x 5" (12.70cm x 12.7cm) square, right sides together. Sew  $\frac{1}{4}$ " (0.64cm) from both sides of the line. Cut apart on the line, press, and trim to  $4\frac{1}{2}$ " x  $4\frac{1}{2}$ " (11.43cm x 11.43cm) to make an HST Unit. Make 112 total. (Fig. 2)

Fig. 2



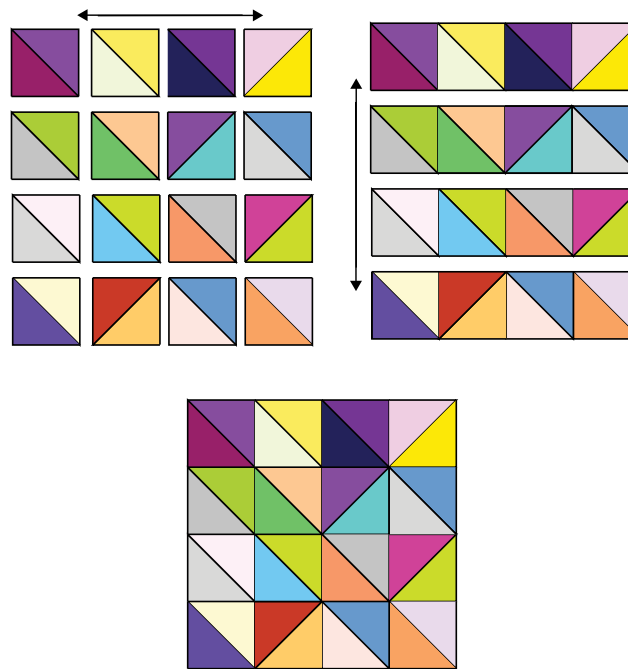
- Arrange (6) HST Units (4)  $4\frac{7}{8}$ " (12.38cm) HSTs in (4) rows to make a pieced star point as shown in **Figure 3**. The HST units can be oriented as desired to keep the random look shown. Sew together in rows, then sew rows together. Sew the pieced star point triangle, centered, to a **Fabric A**  $16\frac{7}{8}$ " (42.86cm) HST to make a Star Point Block. Make (8) total. Trim and square to  $16\frac{1}{2}$ " x  $16\frac{1}{2}$ " (41.91cm x 41.91cm). (**Fig. 3**)

**Fig. 3**



- Sew (16) HST Units together in (4) rows of (4) as shown in **Fig. 4**, again with random orientation, to make a Center Block. Make (4) total,  $16\frac{1}{2}$ " x  $16\frac{1}{2}$ " (41.91cm x 41.91cm). (**Fig. 4**)

**Fig. 4**



## Quilt Top Assembly

- Refer to the **Quilt Layout Diagram** to arrange the **Fabric A**  $16\frac{1}{2}$ " x  $16\frac{1}{2}$ " (41.91cm x 41.91cm) squares, Star Point Blocks, and Center Blocks together into (4) rows. Sew the rows together. (**Quilt Layout Diagram** on page 5)

- Sew (16)  $4\frac{1}{2}$ " x  $4\frac{1}{2}$ " (11.43cm x 11.43cm) squares together into a side border strip. Make (2). Sew to the left and right sides of the quilt center.
- Sew (18)  $4\frac{1}{2}$ " x  $4\frac{1}{2}$ " (11.43cm x 11.43cm) squares together into a top/bottom border strip. Make (2). Sew to the top and bottom of the quilt.

## Finishing

- Sew together the **Fabric B** bias binding strips end to end. Press the seams open. Press the binding strip in half wrong sides together.
- Layer the backing (wrong side up), batting, and quilt top (right side up). Baste the layers together and quilt as desired. Trim excess batting and backing even with the quilt top after quilting is completed.
- Leaving an 8" (20.32cm) tail of binding, sew binding to top of quilt through all layers matching all raw edges. Miter corners. Stop approximately 12" (30.48cm) from where you started. Lay both loose ends of binding flat along quilt edge. Where these two loose ends meet, fold them back on themselves and press to form a crease. Using this crease as your stitching line, sew the two open ends of the binding right sides together. Trim seam to  $\frac{1}{4}$ " (.64cm) and press open. Finish sewing binding to quilt.
- Turn the binding to the back of quilt and hand-stitch in place.

## Quilt Layout Diagram

