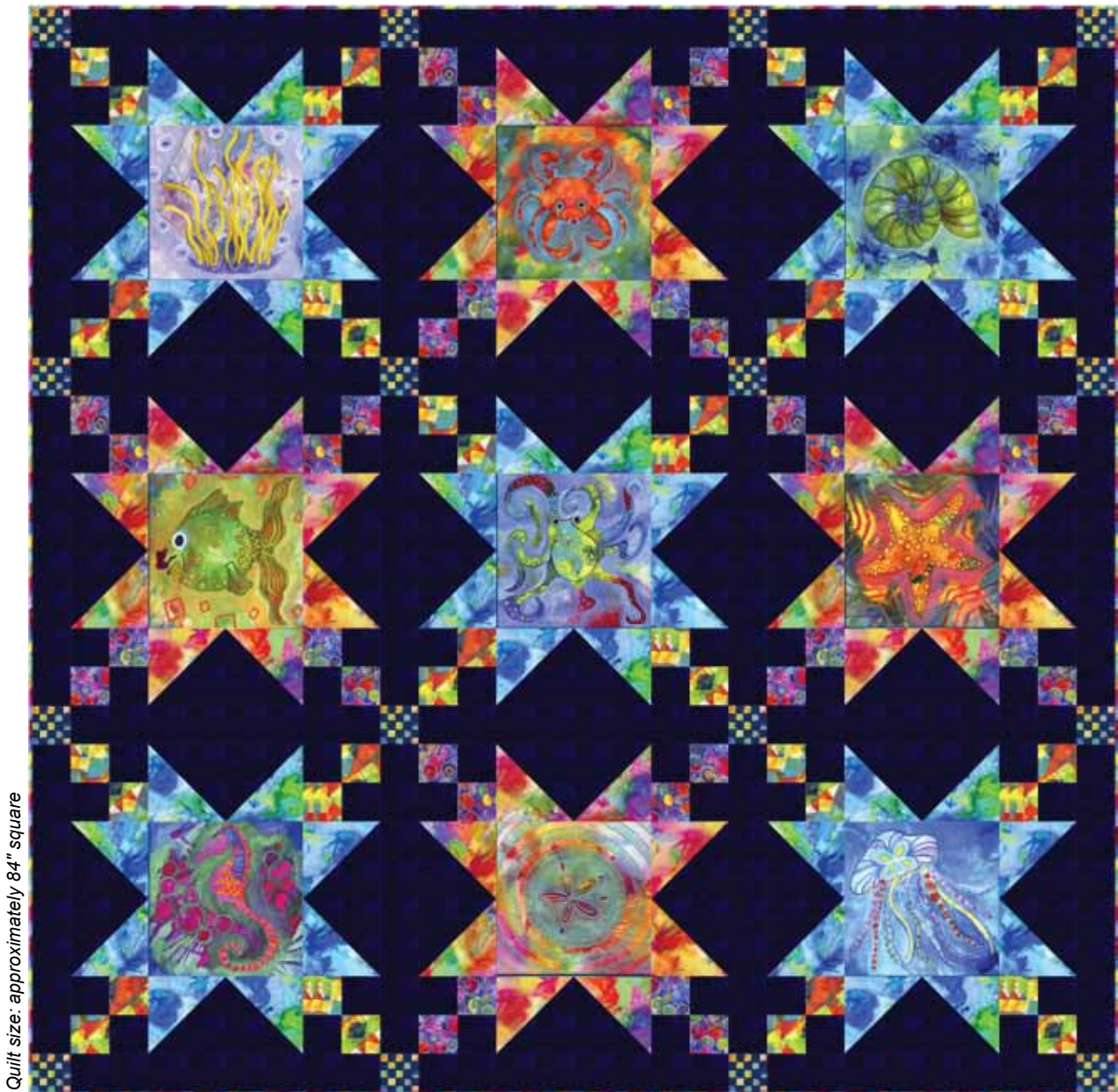


LIVING COASTAL

Sea Stars Quilt Design by Stacey Day



Quilt size: approximately 84" square

Featuring fabrics from
Living Coastal by KG Art Studio for P&B Textiles



P&B Textiles • pbtex.com • 800-351-9087 • 208 Clock Tower Square, Portsmouth, RI 02871

LIVING COASTAL

Fabric collection by KG Art Studio for P&B Textiles

Sea Stars Quilt designed by Stacey Day

Skill level: Confident Beginner • Finished Quilt Size: approximately 84" square

Yardages:

Fabric A: SUED 300 N	3 1/2 yards
Fabric B: LIVC 4272 MU	1 panel (9 Blocks)
Fabric C: LIVC 4273 BV	7/8 yard
Fabric D: LIVC 4273 MU	7/8 yard
Fabric E: LIVC 4274 MU	5/8 yard
Fabric F: LIVC 4275 MU	3/8 yard
Fabric G: LIVC 4276 MU	1/4 yard
Fabric H: LIVC 4277 MU	1/2 yard
Backing: LIVC 4275 MU suggested	5 1/4 yards
Batting	92" x 92"

Cutting Instructions:

Please read all instructions carefully before beginning. Strips are cut across the width of fabric (perpendicular to selvages) unless otherwise stated. All seams are sewn with a 1/4" seam unless otherwise stated. Label all pieces.

From Fabric A:

1. Cut seven 3 1/2" strips. Subcut seventy-two 3 1/2" squares.
2. Cut three 13 1/4" strips. Subcut nine 13 1/4" squares. Cut twice on the diagonal to make thirty-six quarter square triangles (QST).
3. Cut fifteen 3 1/2" strips. Sew strips end-to-end, press seams open. Subcut twenty-four 3 1/2" x 24 1/2" sashing strips.

From Fabric B:

1. Cut nine 12 1/2" squares, centering motif in each square.

From Fabric C:

1. Cut four 6 7/8" strips. Subcut twenty 6 7/8" squares. Cut once on the diagonal to make forty half square triangles (HST).

From Fabric D:

1. Cut four 6 7/8" strips. Subcut sixteen 6 7/8" squares. Cut once on the diagonal to make thirty-two half square triangles (HST).

From Fabric E:

1. Cut nine 2 1/4" strips for binding.

From Fabric F:

1. Cut three 3 1/2" strips. Cut thirty-two 3 1/2" squares.

From Fabric G:

1. Cut two 3 1/2" strips. Cut sixteen 3 1/2" squares.

From Fabric H:

1. Cut four 3 1/2" strips. Cut forty 3 1/2" squares.

Piecing Instructions:

1. Sew 3 1/2" A square right sides together with each F and H 3 1/2" squares to make 2-patches. Press towards A. Sew a matching set of 2-patches together to make 4-Patch blocks. Make sixteen F blocks, set aside as Unit A, and twenty H blocks, set aside as Unit B (Figure 1). Units should measure 6 1/2" square.

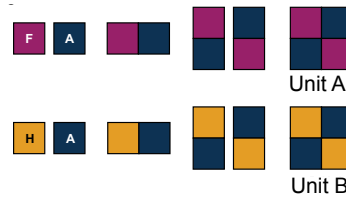


Figure 1

**Make 16 F Unit A.
Make 20 H Unit B.**

2. Sew one pair of C triangles to twenty A triangles as shown. Press towards C, and set aside as Unit C. Make twenty Unit C. Repeat with D triangles and A triangles to make sixteen Unit D (Figure 2). Units should measure 6 1/2" x 12 1/2".

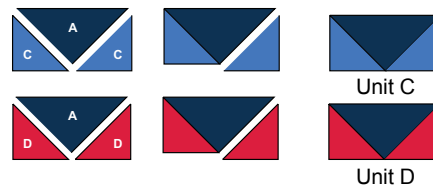


Figure 2

**Make 20 C Unit C.
Make 16 D Unit D.**

3. Sew four B Units and four C Units together with one 12 1/2" B square with the seaweed motif. Repeat with the seahorse, jellyfish, octopus, and seashell motifs to make five A Blocks (Figure 3). Block should measure 24 1/2" square.

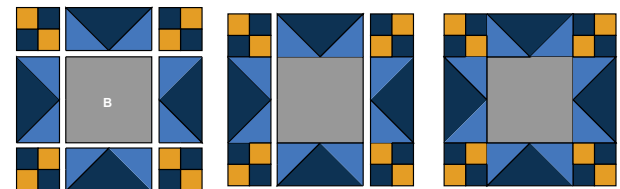


Figure 3 **Make 5 A Blocks.**

4. Sew four A Units and four D Units together with one B 12 1/2" square with the crab motif. Repeat with the fish, sand dollar, and starfish motifs to make four B Blocks (Figure 4). Block should measure 24 1/2" square.

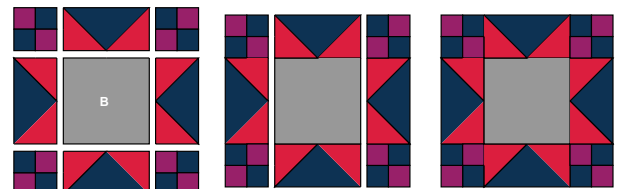


Figure 4 **Make 4 B Blocks.**

5. Sew four 3 1/2" G squares together with three 3 1/2" x 24 1/2" A sashes to make one horizontal sash. Make four (Figure 5).



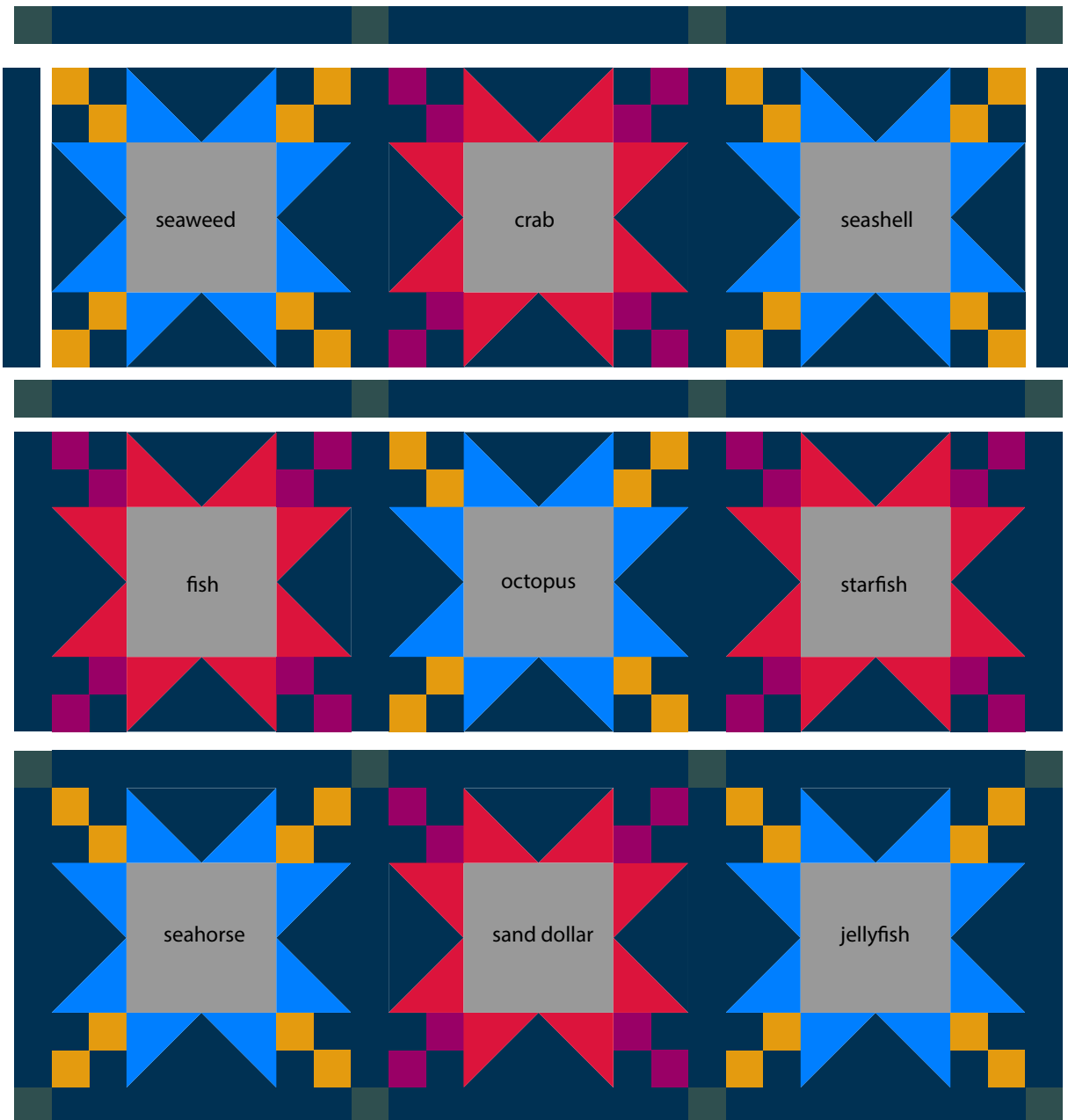
Figure 5 **Make 4 sashings.**

6. Sew the A and B blocks together as shown in the Quilt Diagram, with a 3 1/2" x 24 1/2" A sash between the blocks. Make sure the motifs are all oriented correctly. Sew one A sash to each end of the rows. Press towards A.

Sew the rows together into the quilt top with the horizontal sashes between each row.

Finishing:

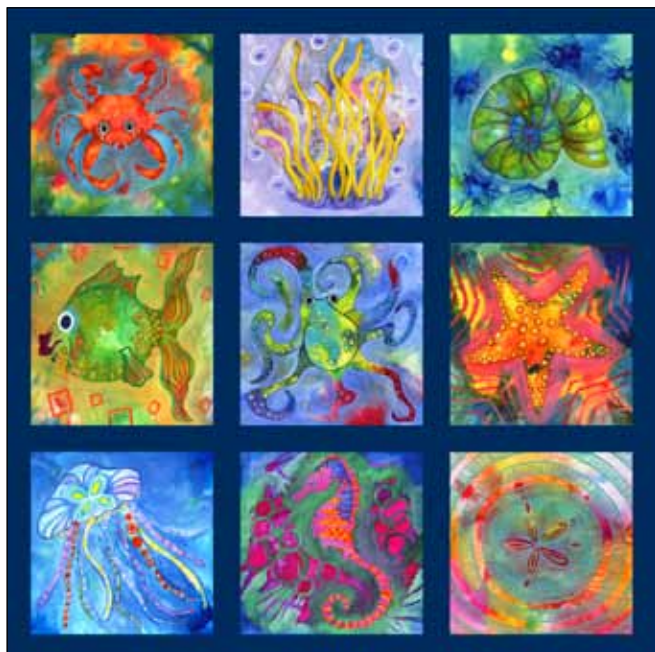
1. Prepare backing using two horizontal seams. Press seams open. Trim backing to 92" x 92".
2. Layer quilt top, batting, and backing. Baste layers together.
3. Quilt as desired.
4. Join 2 1/4"E binding strips with diagonal seams. Press seams open. Attach binding to quilt using your favorite method.
6. Make a label and sew to the back of the quilt.



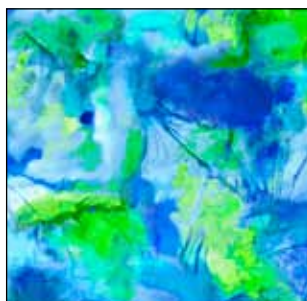
Quilt Diagram

LIVING COASTAL

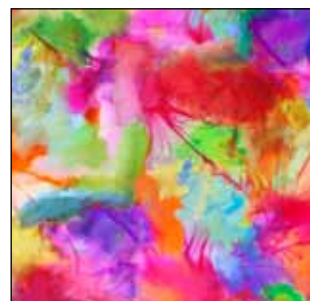
Fabric Collection
by KG Art Studio for P&B Textiles



LIVC 4272 MU*



LIVC 4273 BV*



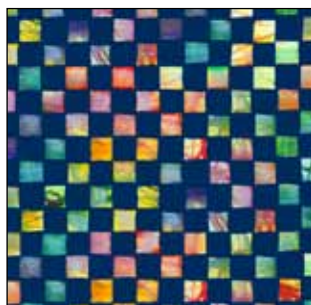
LIVC 4273 MU*



LIVC 4274 MU*



LIVC 4275 MU*†



LIVC 4276 MU*



LIVC 4277 MU*



SUED 300 N*