

# LIVING COASTAL

Tide Pools Quilt Design by Stacey Day



Quilt size: approximately 72" square

Featuring fabrics from  
*Living Coastal* by KG Art Studio for P&B Textiles



P&B Textiles • [pbtex.com](http://pbtex.com) • 800-351-9087 • 208 Clock Tower Square, Portsmouth, RI 02871

# LIVING COASTAL

Fabric collection by KG Art Studio for P&B Textiles

Tide Pools Quilt designed by Stacey Day

Skill level: Confident Beginner • Finished Quilt Size: approximately 72" square

## Yardages:

Fabric A: <b>SUED 300 N</b> .....	2 3/8 yards
Fabric B: <b>LIVC 4272 MU</b> .....	1 panel (9 Blocks)
Fabric C: <b>LIVC 4273 BV</b> .....	2/3 yard
Fabric D: <b>LIVC 4273 MU</b> .....	2/3 yard
Fabric E: <b>LIVC 4274 MU</b> .....	5/8 yard
Fabric F: <b>LIVC 4275 MU</b> .....	2/3 yard
Fabric G: <b>LIVC 4276 MU</b> .....	7/8 yard
Fabric H: <b>LIVC 4277 MU</b> .....	1/3 yard
Backing: <b>LIVC 4275 MU suggested</b> .....	4 1/2 yards
Batting .....	80" x 80"

## Cutting Instructions:

Please read all instructions carefully before beginning. Strips are cut across the width of fabric (perpendicular to selvages) unless otherwise stated. All seams are sewn with a 1/4" seam unless otherwise stated. Label all pieces.

### From Fabric A:

1. Cut fifteen 1 1/2" strips. Subcut eighteen 1 1/2" x 12 1/2" rectangles and eighteen 1 1/2" x 14 1/2" rectangles.
2. Cut eleven 3 7/8" strips. Subcut one hundred eight 3 7/8" squares.
3. Cut four 3 1/2" strips. Subcut thirty-six 3 1/2" squares.

### From Fabric B:

1. Cut nine 12 1/2" squares, centering motif in each square.

### From Fabric C:

1. Cut five 3 7/8" strips. Subcut forty-eight 3 7/8" squares.

### From Fabric D:

1. Cut five 3 7/8" strips. Subcut forty-eight 3 7/8" squares.

### From Fabric E:

1. Cut eight 2 1/4" strips for binding.

### From Fabric F:

1. Cut eight 2 1/2" strips. Subcut eight 2 1/2" x 14 1/2" rectangles and eight 2 1/2" x 18 1/2" rectangles.

### From Fabric G:

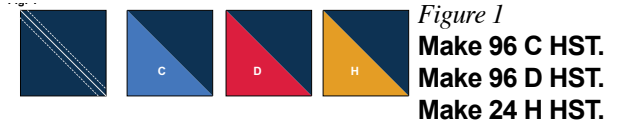
1. Cut ten 2 1/2" strips. Subcut ten 2 1/2" x 14 1/2" rectangles and ten 2 1/2" x 18 1/2" rectangles.

### From Fabric H:

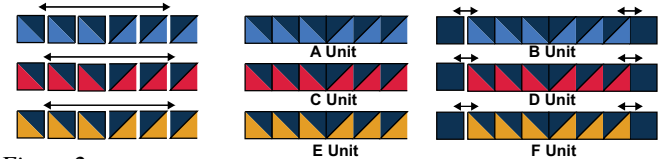
1. Cut two 3 7/8" strips. Subcut twelve 3 7/8" squares.

## Piecing Instructions:

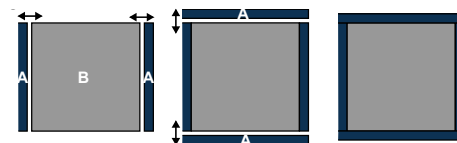
1. Draw a diagonal line from corner to corner on each 3 7/8" A square.
2. Pin one 3 7/8" A square right sides together with each C, D, and H 3 7/8" square. Sew 1/4" from either side of the drawn line, and then cut apart on the line. Press seam toward A. Make ninety-six C half square triangles (HST), ninety-six D HST and twenty-four H HST (Figure 1).



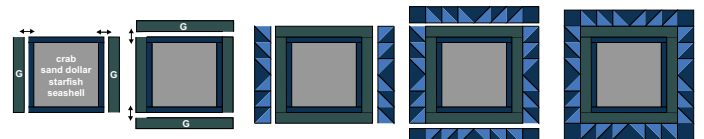
3. Sew six C HST together into a strip as shown, pressing seams open. Make sixteen A Units. Sew one 3 1/2" A square to each end of eight A Units, and set aside as B Units. Repeat with D HST to make eight C Units and eight D Units and H HST to make two E Units and two F Units (Figure 2).



4. Sew one 1 1/2" x 12 1/2" A rectangle to opposite sides of each 12 1/2" B square. Press towards A. Sew one 1 1/2" x 14 1/2" A rectangle to the top and bottom. Press toward A (Figure 3). Blocks should be 14 1/2" square.



5. Sew one 2 1/2" x 14 1/2" G rectangle to opposite sides of the framed B squares from Step 4 with the crab, sand dollar, starfish, and seashell motifs. Press toward G. Sew 2 1/2" x 18 1/2" G rectangles to the remaining sides. Press toward G. Sew A Units to the sides of the block, press seams open. Sew B Units to the top and bottom of the block (Figure 4). Press seams open. Blocks should be 24 1/2" square.



6. Sew one 2 1/2" x 14 1/2" F rectangle to opposite sides of the framed B squares from Step 4 with the octopus, seaweed, jellyfish, and seahorse motifs. Press toward F. Sew 2 1/2" x 18 1/2" F strips to the remaining sides. Press toward F. Sew C Units to the sides of the block, press seams open. Sew D Units to the top and bottom of the block (Figure 5). Press seams open. Blocks should be 24 1/2" square.

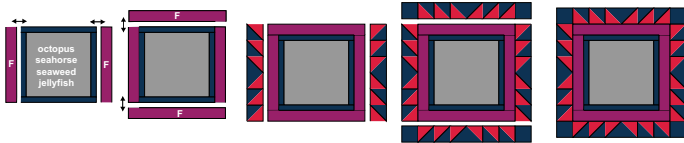


Figure 5

7. Sew one 2 1/2" x 14 1/2" G rectangle to opposite sides of the framed B squares from Step 4 with the fish motif. Press toward G. Sew 2 1/2" x 18 1/2" G rectangles to the remaining sides. Press toward G. Sew E Units to the sides of the block, press seams open. Sew F Units to the top and bottom of the block (Figure 6). Press seams open. Blocks should be 24 1/2" square.

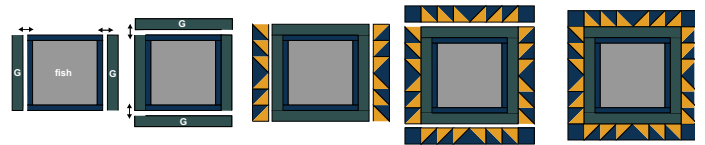
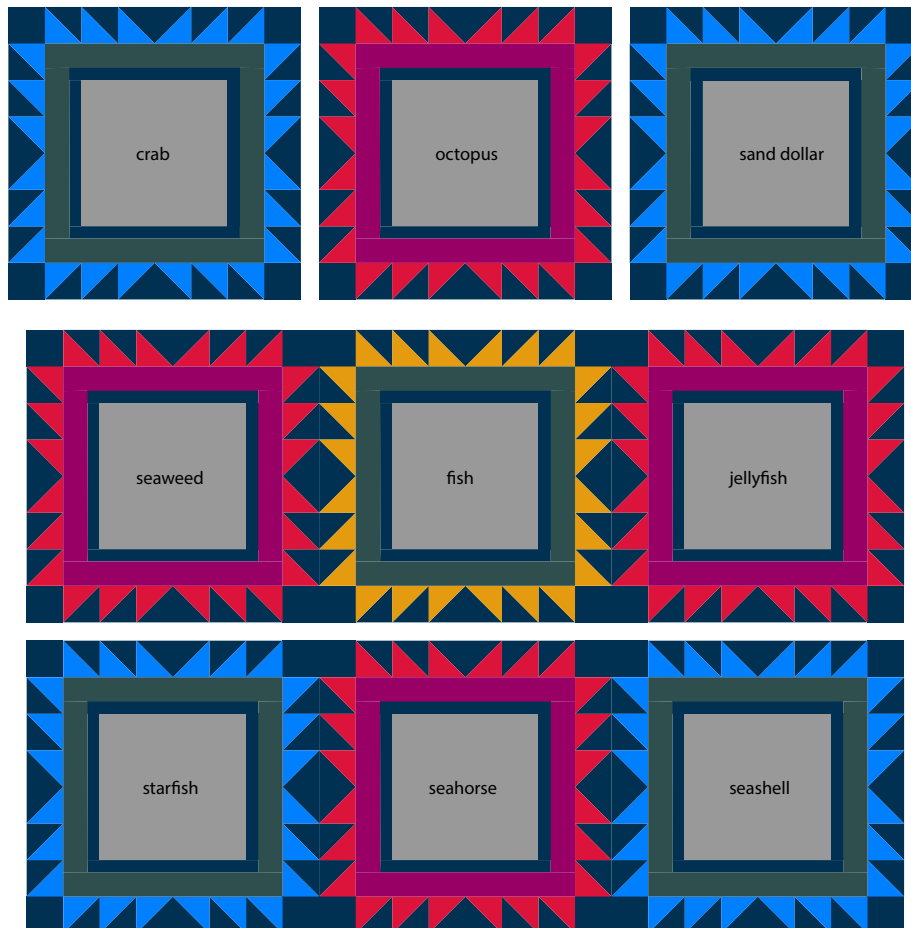


Figure 6

8. Sew the blocks together into rows as shown in Quilt Diagram, making sure the motifs are all oriented correctly. Press seams open. Sew the rows together into the quilt top. Press seams open.

### Finishing:

1. Prepare backing using a horizontal seams. Press seams open. Trim backing to 80" x 80".
2. Layer quilt top, batting, and backing. Baste layers together.
3. Quilt as desired.
4. Join 2 1/4" E binding strips with diagonal seams. Press seams open. Attach binding to quilt using your favorite method.
5. Make a label and sew to the back of the quilt.

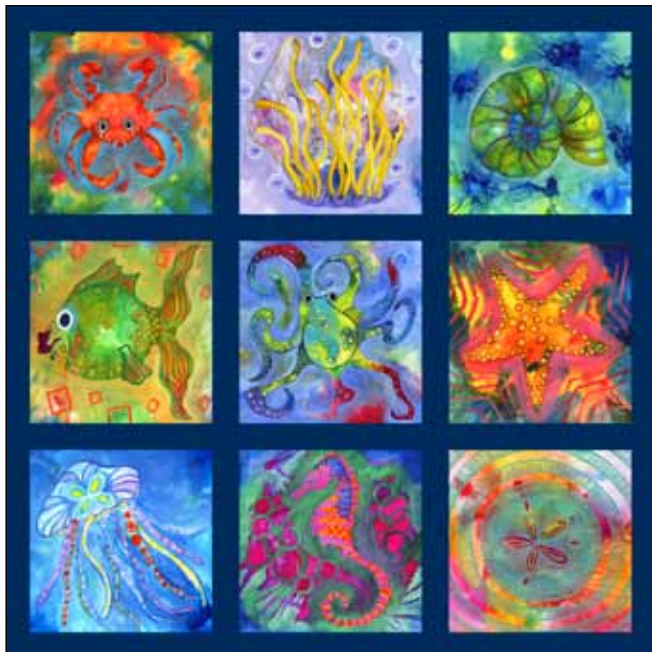


Quilt Diagram

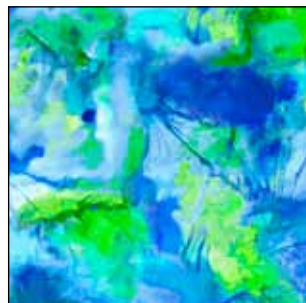


# LIVING COASTAL

Fabric Collection  
by KG Art Studio for P&B Textiles



LIVC 4272 MU\*



LIVC 4273 BV\*



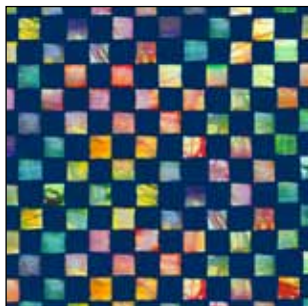
LIVC 4273 MU\*



LIVC 4274 MU\*



LIVC 4275 MU\*†



LIVC 4276 MU\*



LIVC 4277 MU\*



SUED 300 N\*