



# Promenade Quilt

**Featuring Backyard Wonder by  
Adam Trest for FreeSpirit Fabrics**

**Technique:** Pieced

**Skill Level:** Advanced Beginner

**Finished Size:** 70" x 85" (1.78m x 2.16m)

**Project designed by:** Stacey Day

All possible care has been taken to ensure the accuracy of this pattern. We are not responsible for printing errors or the manner in which individual work varies. Please read the instructions carefully before starting this project. If kitting, it is recommended a sample is made to confirm accuracy.



## FABRIC REQUIREMENTS (Tech edited by: Alison M. Schmidt)

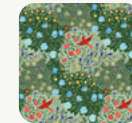
	Design	Color	Item ID	Yardage
A	Walk in the Wood	Scenic	PWAT001.SCENIC	1¾ yard (1.60m)
B	Through the Garden	Green	PWAT003.GREEN	1 yard (0.91m)
C	Carefree Cardinals	Pink	PWAT005.PINK	1 yard (0.91m)
D	Treetops in Blue	Navy	PWAT008.NAVY	1 yard (0.91m)
E	Racing Rabbits	Blue	PWAT010.BLUE*	¾ yards (0.69m)
F	Field of Flowers	Cream	PWAT011.CREAM	¾ yards (0.69m)
G	Backyard Bouquets	Red	PWAT012.RED	¾ yards (0.69m)

\* includes binding

## Swatches



A



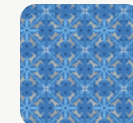
B



C



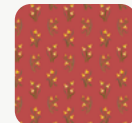
D



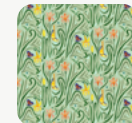
E



F



G



44"

## Backing (Purchased Separately)

44" (1.12m) wide

Daylily Dance	Green	PWAT006.GREEN	4¾ yards (4.34m)
---------------	-------	---------------	------------------

## ADDITIONAL REQUIREMENTS

- 78" x 93" (1.98m x 2.36m) batting
- 100% cotton thread in a color to match



## CUTTING

WOF = Width of Fabric

**Note:** To ensure accuracy, all borders will be cut to fit individually as each previous round is completed.

### Fabric A, fussy cut:

(1) 55½" x WOF strip, so that the raw edges of the piece are aligned with the edges of the background stripes as much as possible and no motifs are cut off. Then trim selvages and excess fabric evenly from long sides to make a 40½" wide x 55½" long rectangle.

### Fabric A cutting diagram



### Fabric B, cut:

(8) 4" x WOF

### Fabric C, fussy cut:

(6) 3" x WOF, each centered on a single line of bird motifs

### Fabric C cutting diagram



### Fabric D, cut:

(15) 2" x WOF

### Fabric F, cut:

(7) 3½" x WOF

### Fabric E, cut:

(10) 2½" x WOF for binding

### Fabric G, cut:

(11) 2" x WOF

## INSTRUCTIONS

**Notes:** All seam allowances are  $\frac{1}{4}$ " and pieces are sewn right sides together. Press seam allowances open within border strips, and towards the newly sewn border strips after each round.

- 1** Sew all the **Fabric B** WOF strips together end to end into 1 continuous strip, using either straight or diagonal seams. Make sure to keep the motifs oriented the same for each strip you add.
- 2** Repeat Step 1 to sew all the **Fabric C, D, F, and G** strips together by fabric, making sure to keep the **Fabric C** fussy-cut bird motifs all oriented in the same direction.
- 3** From the long **Fabric G** strip, cut (2)  $2" \times 55\frac{1}{2}"$  and (2)  $2" \times 43\frac{1}{2}"$  border strips.
- 4** Sew a **Fabric G**  $2" \times 55\frac{1}{2}"$  strip to the left and right sides of the **Fabric A** piece, matching ends and centers. Then sew the  $2" \times 43\frac{1}{2}"$  strips to the top and bottom to complete the first border.
- 5** Referring to the table below and the **Quilt Layout** diagram (page 5) for fabric placement cut sizes, cut (2) each side and top/bottom borders from the remaining long strips and add to the quilt center. For fussy-cut borders # 2 and 6, refer to the quilt image on page 1 for motif orientation.

**Tip:** Before cutting border strips, measure the quilt center both vertically and horizontally to confirm the borders will fit; adjust border cut lengths as needed.

Border #	Fabric	Sides	Top/Bottom
1	<b>G</b>	$2" \times 55\frac{1}{2}"$	$2" \times 43\frac{1}{2}"$
2	<b>C</b>	$3" \times 58\frac{1}{2}"$	$3" \times 48\frac{1}{2}"$
3	<b>G</b>	$2" \times 63\frac{1}{2}"$	$2" \times 51\frac{1}{2}"$
4	<b>F</b>	$3\frac{1}{2}" \times 66\frac{1}{2}"$	$3\frac{1}{2}" \times 57\frac{1}{2}"$
5	<b>D</b>	$2" \times 72\frac{1}{2}"$	$2" \times 60\frac{1}{2}"$
6	<b>B</b>	$4" \times 75\frac{1}{2}"$	$4" \times 67\frac{1}{2}"$
7	<b>D</b>	$2" \times 82\frac{1}{2}"$	$2" \times 70\frac{1}{2}"$

## FINISHING

- 6** Sew together the  $2\frac{1}{2}"$  **Fabric E** binding strips end to end using diagonal seams. Press seams open. Press the binding strip in half wrong sides together.
- 7** Layer backing (wrong side up), batting, and quilt top (right side up). Baste the layers together and quilt as desired. Trim excess batting and backing even with the top after quilting is completed.

- 8 Leaving an 8" tail of binding, sew the binding to the top of the quilt through all layers matching all raw edges. Miter corners. Stop approximately 12" from where you started. Lay both loose ends of binding flat along quilt edge. Where the loose ends meet, fold them back on themselves and press to form a crease. Using this crease as your stitching line, sew the two open ends of the binding right sides together. Trim seam to  $\frac{1}{4}$ " and press open. Finish sewing binding to quilt.
- 9 Turn the binding to the back of quilt and hand-stitch in place.

## Quilt Layout

